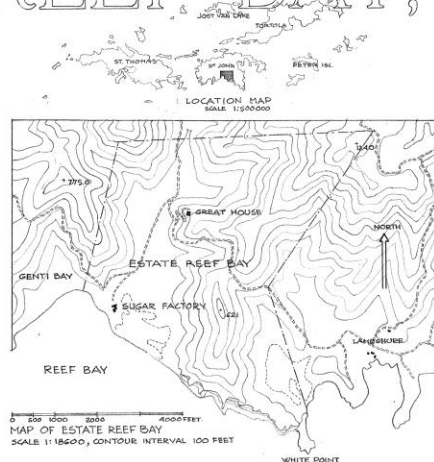


# GREAT HOUSE & GROUNDS, ESTATE REEF BAY, ST. JOHN.



THE BUILDINGS OF THE ESTATE REEF BAY, GREAT HOUSE COMPLEX AND SUGAR FACTORY, WERE CONSTRUCTED IN 1844 ON EXISTING BUILDING SITES AND INCORPORATED THE REMAINS OF OLDER STRUCTURES. THE ESTATE WAS THE LAST ONE TO PRODUCE SUGAR ON THE ISLAND OF ST. JOHN AND THE MILL WAS OPERATED UNTIL 1907.

RECORDED BY THE UNITED STATES NATIONAL PARK SERVICE

THIS PROJECT WAS FINANCED FROM FUNDS OF THE "MISSION 66" PROGRAM OF THE NATIONAL PARK SERVICE MEASURED AND DRAWN DURING THE PERIODS OCT-DEC 1958 AND AUG-DEC 1959 UNDER THE DIRECTION OF CHARLES E. PETERSON, SUPERVISING ARCHITECT, HISTORIC STRUCTURES AND FC GUESSING, ARCHITECT BY ARCHITECTS PHILIP E. GARDNER & MICHAEL EVERETT & STUDENT ASSISTANT ARCHITECT FRANK MACIOGE (UNIV. OF PA)

FOR ADDITIONAL INFORMATION ON ESTATE REEF BAY AND ITS BUILDINGS, SEE ALSO THE HISTORIC AMERICAN BUILDING SURVEYS OF SERVICE BUILDINGS OF GREAT HOUSE, SUGAR FACTORY AND SUGAR FACTORY RE-CONSTRUCTION DRAWINGS, ESTATE REEF BAY, ST. JOHN, V. I.

FC GUESSING, DEL.

UNDER DIRECTION OF UNITED STATES DEPARTMENT OF THE INTERIOR  
NATIONAL PARK SERVICE, BRANCH OF PLANS AND DESIGN

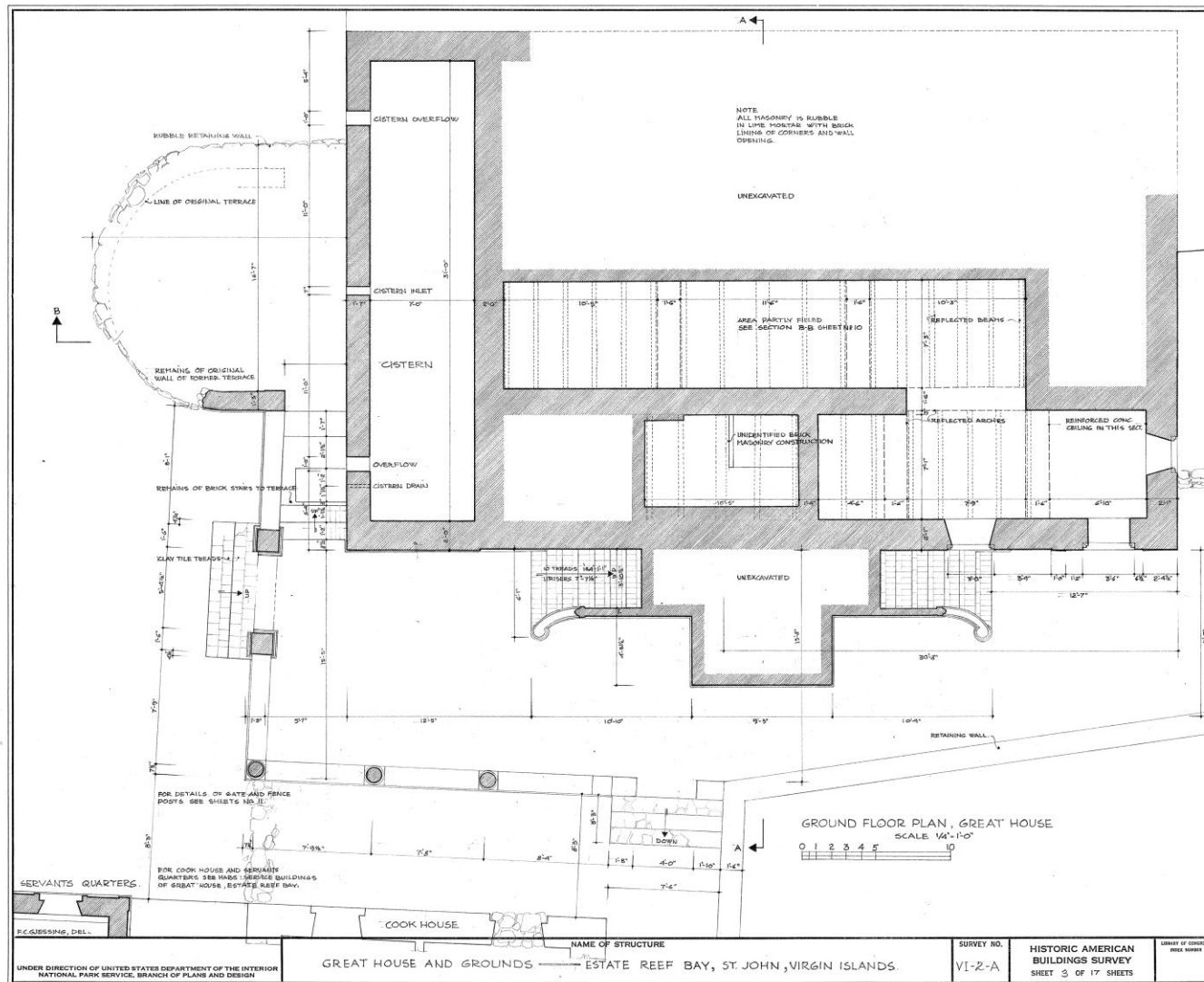
NAME OF STRUCTURE  
GREAT HOUSE AND GROUNDS — ESTATE REEF BAY, ST. JOHN, VIRGIN ISLANDS

SURVEY NO.  
VI-2-A

HISTORIC AMERICAN  
BUILDINGS SURVEY  
SHEET 1 OF 17 SHEETS

LIBRARY OF CONGRESS  
BIBL. NUM.









J.C. GUERIN, DEL.

UNDER DIRECTION OF UNITED STATES DEPARTMENT OF THE INTERIOR  
NATIONAL PARK SERVICE, BRANCH OF PLANS AND DESIGN

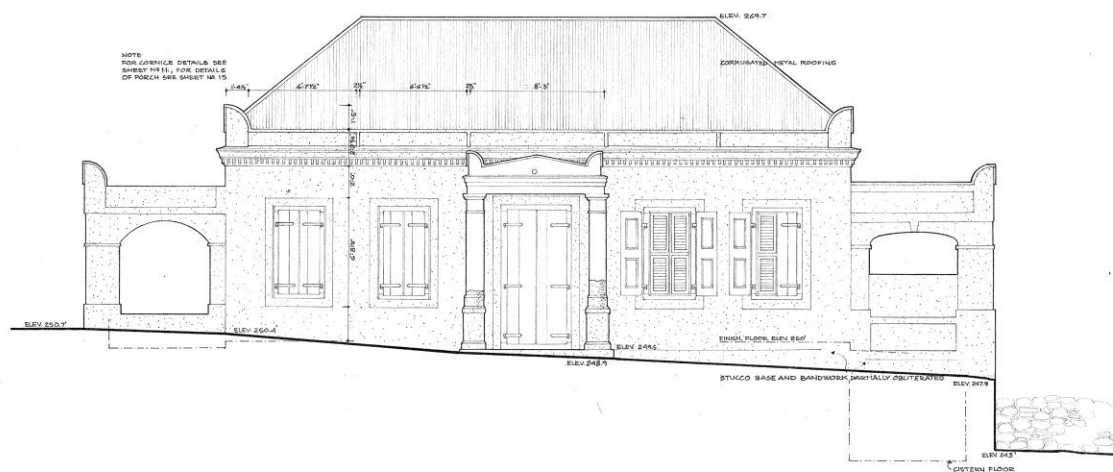
NAME OF STRUCTURE  
GREAT HOUSE AND GROUNDS ESTATE REEF BAY, ST. JOHN, VIRGIN ISLANDS

SURVEY NO.  
VI-2-A

HISTORIC AMERICAN  
BUILDINGS SURVEY  
SHEET 5 OF 17 SHEETS

UNIVERSITY OF MICHIGAN  
DATA NUMBER

TRIM LINE



NOTE:  
THIS SECTION OF THE REAR PORCH WHICH IS SHOWN  
NOT STIPPLED IS A RECONSTRUCTION BASED ON FRAG-  
MENTS FOUND ON SITE. PORCH TOPPLED JULY 1958.  
WHEREAS ARE COLUMN WITH SHUTTERS NOW STORED IN  
THE BASEMENT. FOR DETAILS SEE SHEET 14-14.

## EAST ELEVATION, GREAT HOUSE

SCALE 1/4" = 1'-0"

0 1 2 3 4 5 10

DATUM LINE: ASSUMED ELEVATION OF FINISHED FLOOR 250

P.C. GESSING - DEL.

UNDER DIRECTION OF UNITED STATES DEPARTMENT OF THE INTERIOR  
NATIONAL PARK SERVICE, BRANCH OF PLANS AND DESIGN

NAME OF STRUCTURE  
GREAT HOUSE AND GROUNDS — ESTATE REEF BAY, ST JOHN, VIRGIN ISLANDS

SURVEY NO.  
VI-2-A

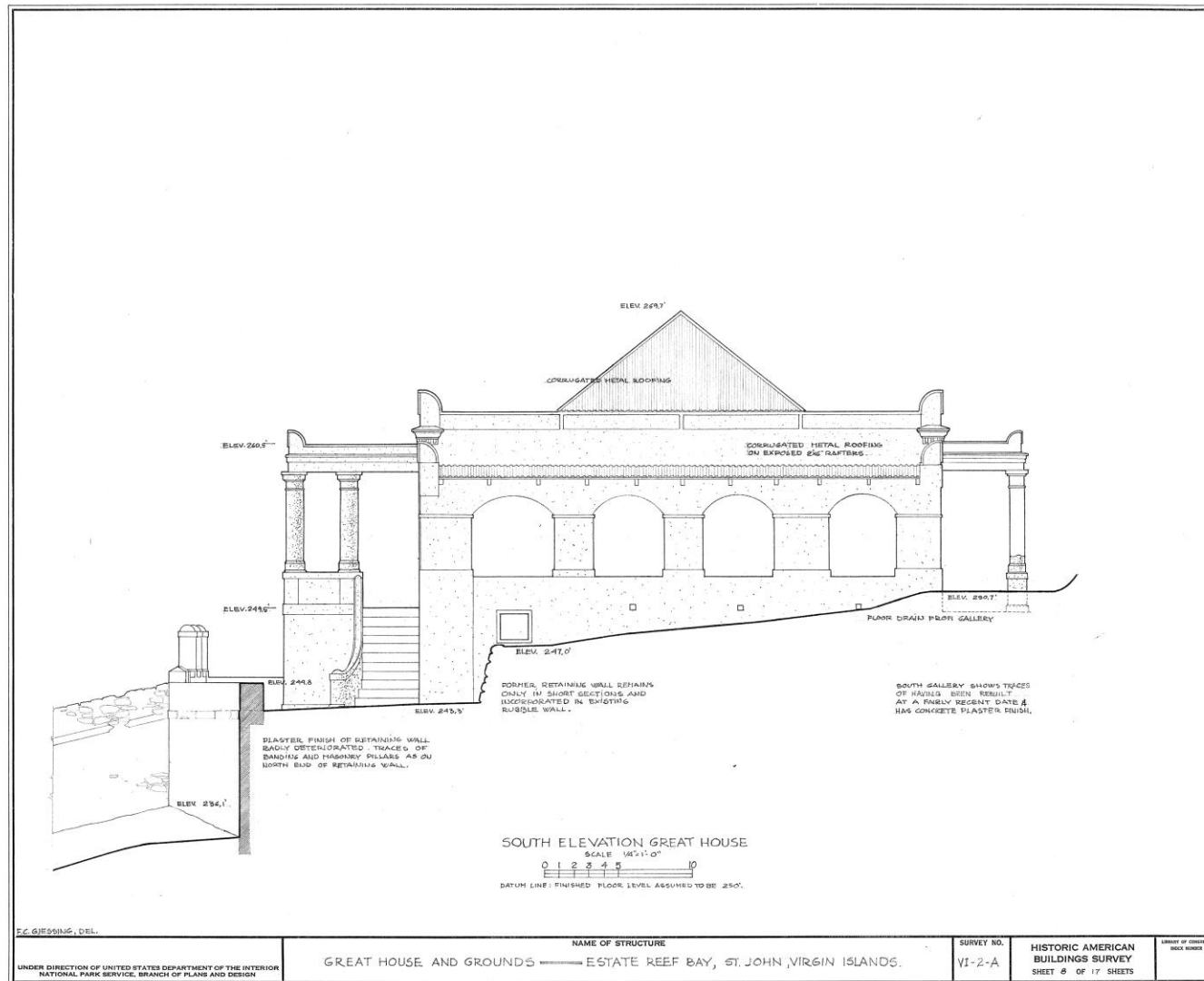
HISTORIC AMERICAN  
BUILDINGS SURVEY  
SHEET 4 OF 17 SHEETS

LIST OF CORRECTIONS  
INDEX NUMBER

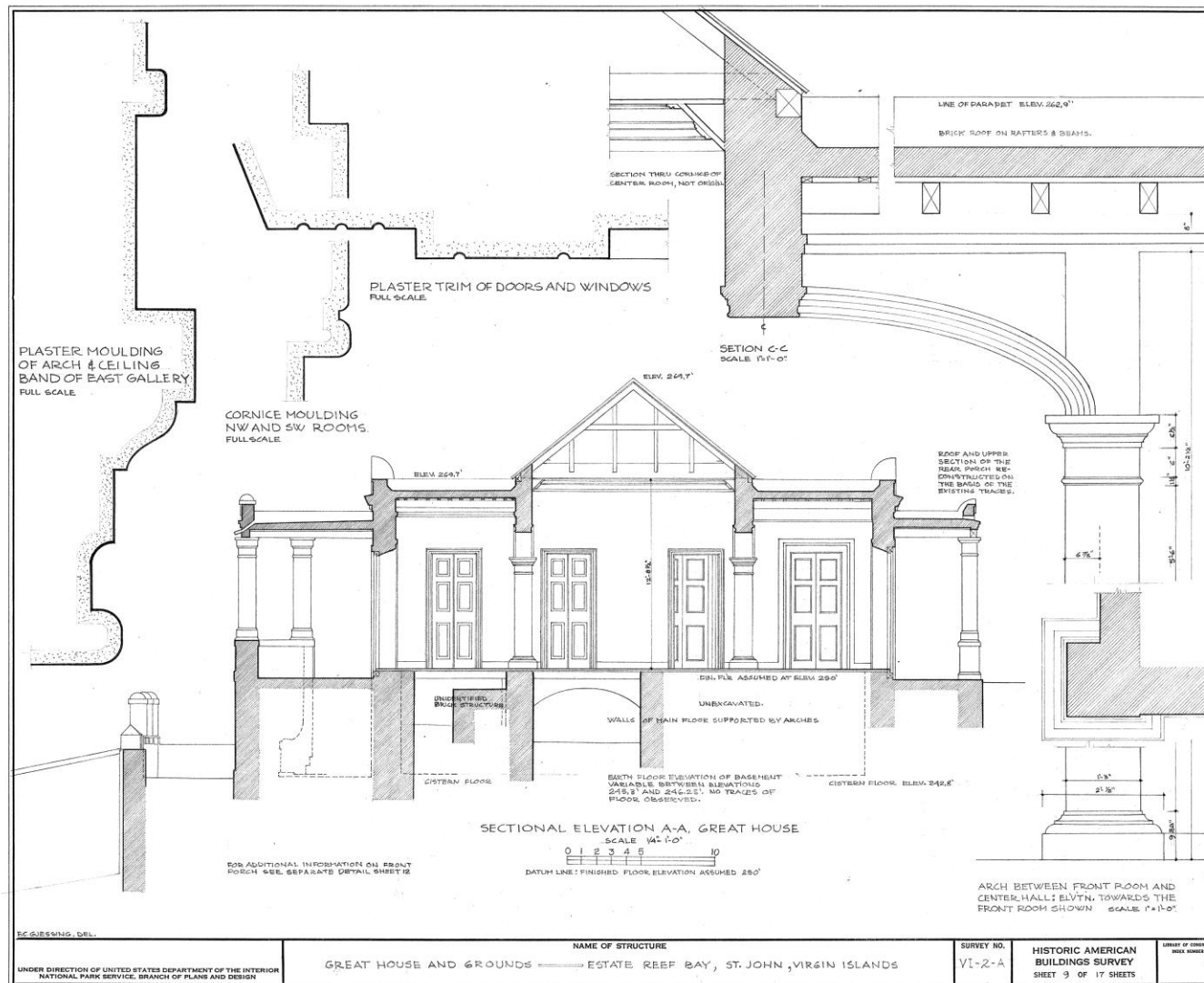
TRIM LINE

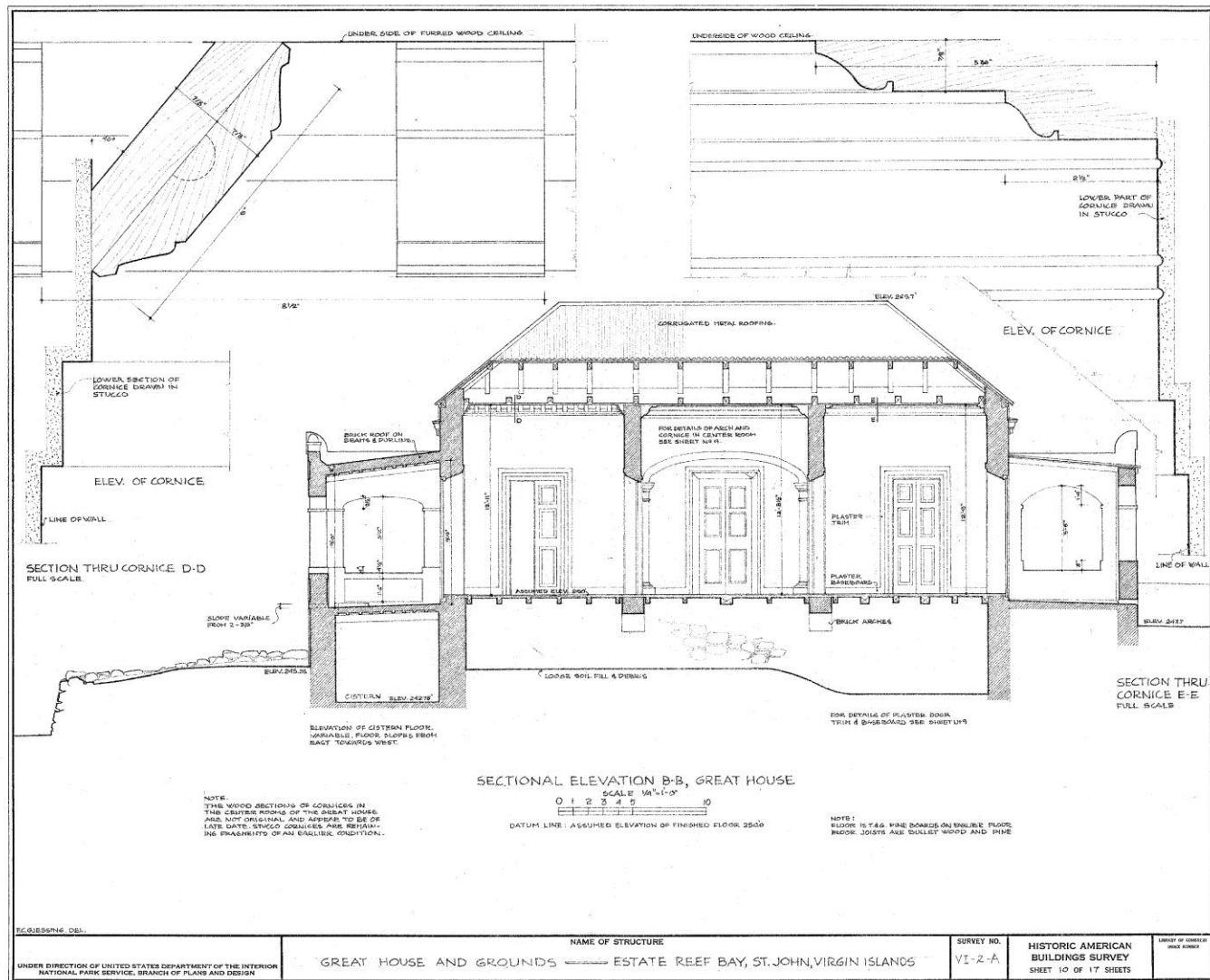


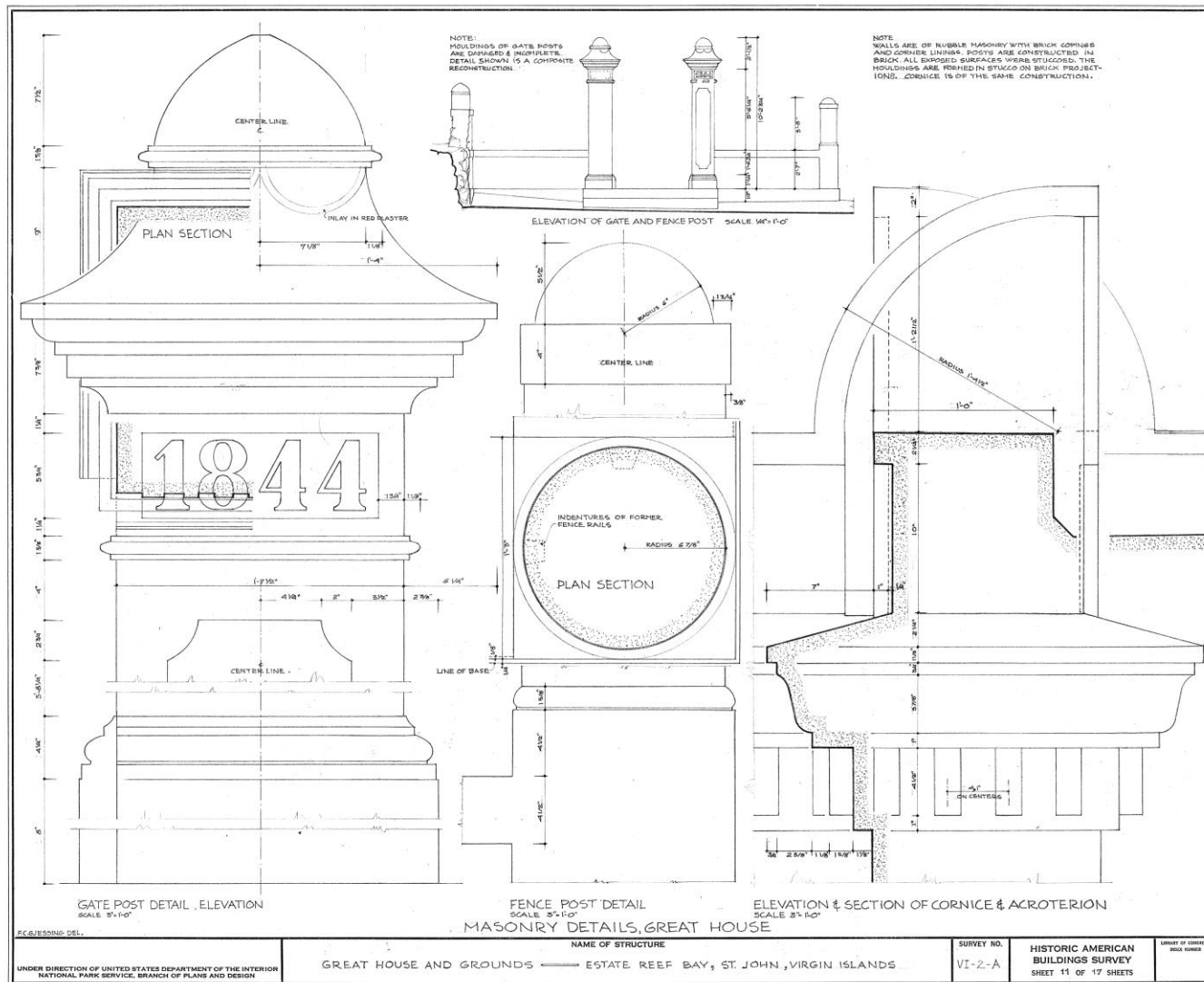
TRIM LINE



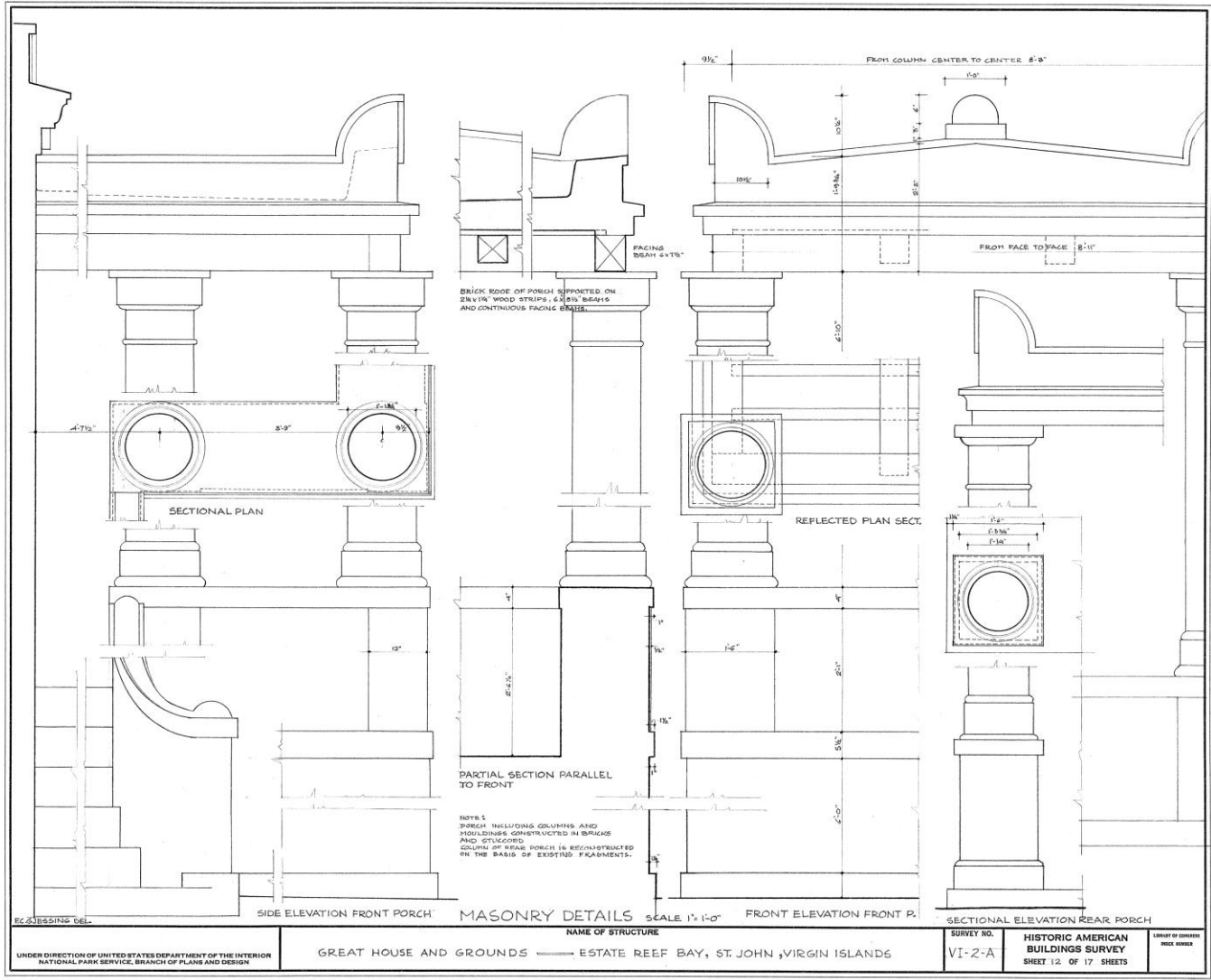




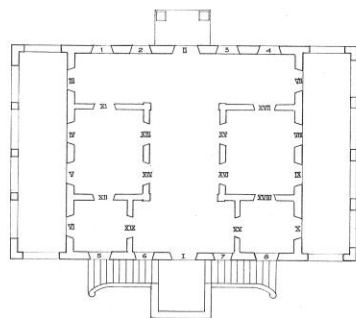
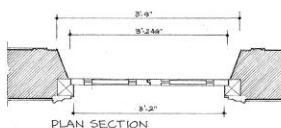




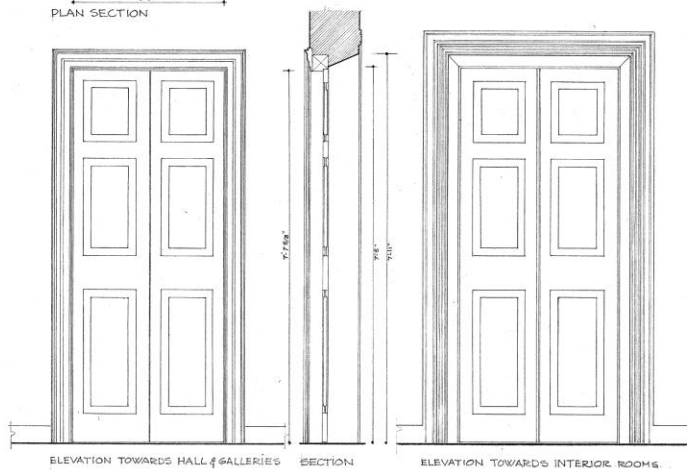
TRIM LINE



TRIM LINE

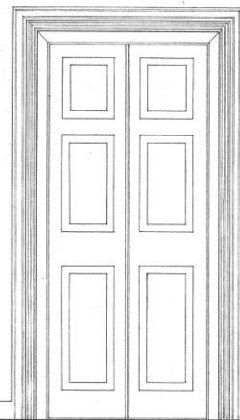
KEY PLAN FOR DOOR AND WINDOW DETAILS  
SCALE 3/32" = 1'-0"

PLAN SECTION



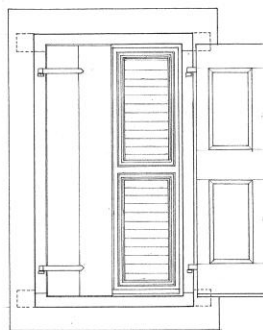
ELEVATION TOWARDS HALL &amp; GALLERIES

SECTION



ELEVATION TOWARDS INTERIOR ROOMS

DOOR TYPE C

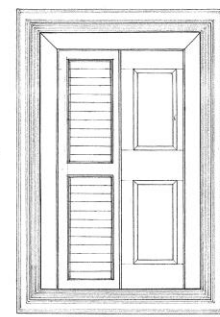
DOOR & WINDOW DETAILS  
UNLESS OTHERWISE NOTED ALL DRAWINGS ARE IN SCALE 3/16" = 1'-0"

ELEVATION TOWARDS EXTERIOR

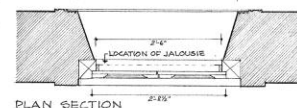
WINDOW &amp; SHUTTER DESIGN.



SECTION



ELEVATION TOWARDS INTERIOR



PLAN SECTION

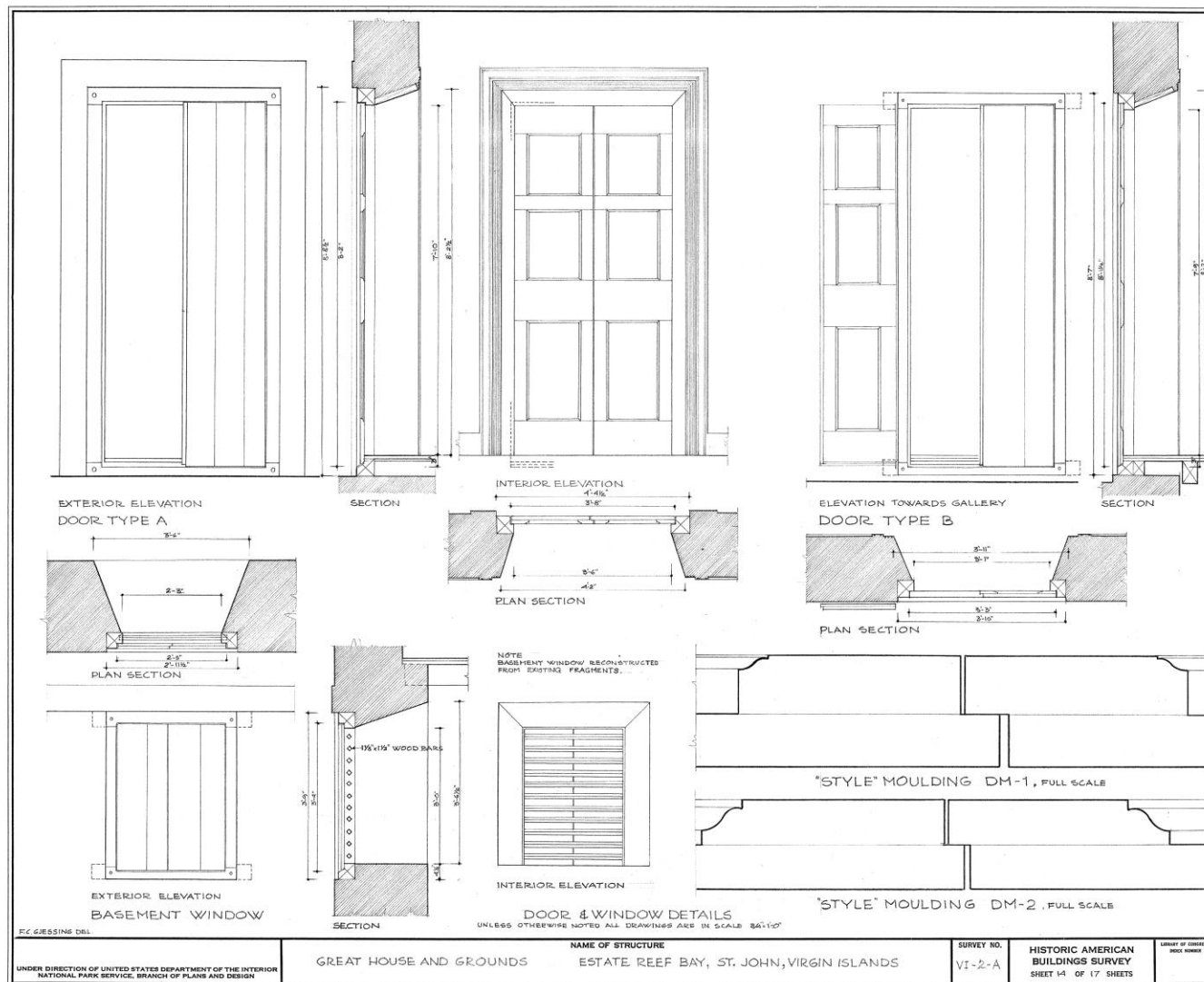
## DOOR &amp; WINDOW SCHEDULE

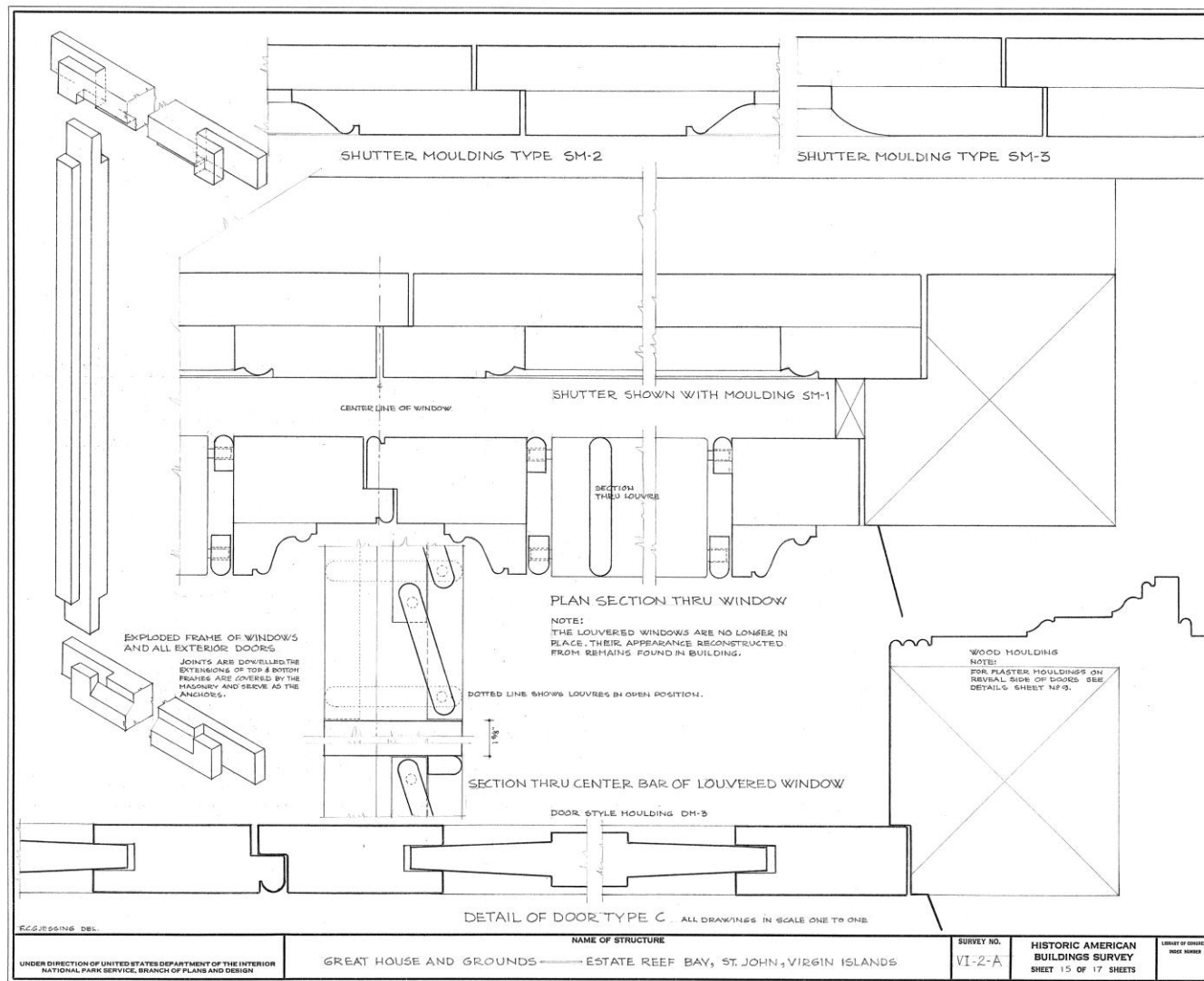
NO.	DOOR TYPE	STYLES	HINGES	NO.	TYPE	HOOKS	RINGS	OTHER HARDWARE AND MISCELLANEOUS NOTES
1	A	DM-1	4	H2	4	2		TRACE OF LOCK NOW MISSING, ONE PORCELAIN KNOB FOUND
2	B	DM-1	4	H1	4	2		TRACE OF LOCK NOW MISSING
3	B	DM-1	4	H2	4	1		
4	B	DM-1	4	H2	4	1		
5	B	DM-1	4	H2	4	1		
6	B	DM-1	4	H2	4	1		
7	B	DM-1	4	H2	4	1		
8	B	DM-1	4	H2	4	1		
9	B	DM-1	4	H2	4	1		
10	B	DM-1	4	H2	4	1		
11	B	DM-1	4	H2	4	1		
12	B	DM-1	4	H2	4	1		
13	B	DM-1	4	H2	4	1		
14	B	DM-1	4	H2	4	1		
15	B	DM-1	4	H2	4	1		
16	B	DM-1	4	H2	4	1		
17	B	DM-1	4	H2	4	1		
18	B	DM-1	4	H2	4	1		
19	B	DM-1	4	H2	4	1		
20	B	DM-1	4	H2	4	1		
21	B	DM-1	4	H2	4	1		
22	B	DM-1	4	H2	4	1		
23	B	DM-1	4	H2	4	1		
24	B	DM-1	4	H2	4	1		
25	B	DM-1	4	H2	4	1		
26	B	DM-1	4	H2	4	1		
27	B	DM-1	4	H2	4	1		
28	B	DM-1	4	H2	4	1		
29	B	DM-1	4	H2	4	1		
30	B	DM-1	4	H2	4	1		
31	C	DM-3		H3				OLD SURFACE BOLT AND DOOR STOP
32	C	DM-3		H3				ONE NEW SURFACE BOLT AND SPRING LATCH WITH BRASS KNOB
33	C	DM-3		H3				TWO NEW SURFACE BOLTS AND SPRING LATCH WITH BRASS KNOB
34	C	DM-3		H3				TWO NEW SURFACE BOLTS
35	C	DM-3		H3				TWO NEW SURFACE BOLTS & SPRING LATCH WITH BRASS KNOB
36	C	DM-3		H3				ONE NEW SURFACE BOLT & SPRING LATCH
37	C	DM-3		H3				SPRING LATCH WITH BRASS KNOB, REMOVED
38	C	DM-3		H3				ONE NEW SURFACE BOLT AND DOOR STOP
39	C	DM-3		H3				TWO NEW SURFACE BOLTS
40	C	DM-3		H3				MISCELLANEOUS NOTES
41	SH	SH	4	H1	4	1		
42	SH	SH	4	H1	4	1		
43	SH	SH	4	H1	4	1		
44	SH	SH	4	H1	4	1		
45	SH	SH	4	H1	4	1		
46	SH	SH	4	H1	4	1		
47	SH	SH	4	H1	4	1		
48	SH	SH	4	H1	4	1		
49	SH	SH	4	H1	4	1		
50	SH	SH	4	H1	4	1		
51	SH	SH	4	H1	4	1		
52	SH	SH	4	H1	4	1		
53	SH	SH	4	H1	4	1		
54	SH	SH	4	H1	4	1		
55	SH	SH	4	H1	4	1		
56	SH	SH	4	H1	4	1		
57	SH	SH	4	H1	4	1		
58	SH	SH	4	H1	4	1		
59	SH	SH	4	H1	4	1		
60	SH	SH	4	H1	4	1		
61	SH	SH	4	H1	4	1		
62	SH	SH	4	H1	4	1		
63	SH	SH	4	H1	4	1		
64	SH	SH	4	H1	4	1		
65	SH	SH	4	H1	4	1		
66	SH	SH	4	H1	4	1		
67	SH	SH	4	H1	4	1		
68	SH	SH	4	H1	4	1		
69	SH	SH	4	H1	4	1		
70	SH	SH	4	H1	4	1		
71	SH	SH	4	H1	4	1		
72	SH	SH	4	H1	4	1		
73	SH	SH	4	H1	4	1		
74	SH	SH	4	H1	4	1		
75	SH	SH	4	H1	4	1		
76	SH	SH	4	H1	4	1		
77	SH	SH	4	H1	4	1		
78	SH	SH	4	H1	4	1		
79	SH	SH	4	H1	4	1		
80	SH	SH	4	H1	4	1		
81	SH	SH	4	H1	4	1		
82	SH	SH	4	H1	4	1		
83	SH	SH	4	H1	4	1		
84	SH	SH	4	H1	4	1		
85	SH	SH	4	H1	4	1		
86	SH	SH	4	H1	4	1		
87	SH	SH	4	H1	4	1		
88	SH	SH	4	H1	4	1		
89	SH	SH	4	H1	4	1		
90	SH	SH	4	H1	4	1		
91	SH	SH	4	H1	4	1		
92	SH	SH	4	H1	4	1		
93	SH	SH	4	H1	4	1		
94	SH	SH	4	H1	4	1		
95	SH	SH	4	H1	4	1		
96	SH	SH	4	H1	4	1		
97	SH	SH	4	H1	4	1		
98	SH	SH	4	H1	4	1		
99	SH	SH	4	H1	4	1		
100	SH	SH	4	H1	4	1		

FOR MOULDINGS OF DOOR STYLES SEE SHEET NA 14, FOR MOULDINGS ON SHUTTERS SEE SHEET NA 15  
ALL HARDWARE DETAILS ARE SHOWN ON SHEETS NA 16 & 17 EXCEPT FOR MODERN SUPPLEMENTS FROM 1955

A.C. ORIGINAL: DEL.

UNDER DIRECTION OF UNITED STATES DEPARTMENT OF THE INTERIOR  
NATIONAL PARK SERVICE, BRANCH OF PLANS AND DESIGNNAME OF STRUCTURE  
GREAT HOUSE AND GROUNDS — ESTATE REEF BAY, ST. JOHN, VIRGIN ISLANDSSURVEY NO.  
VI-2-AHISTORIC AMERICAN  
BUILDINGS SURVEY  
SHEET 15 OF 17 SHEETSLIBRARY OF CONGRESS  
DRAWING NUMBER

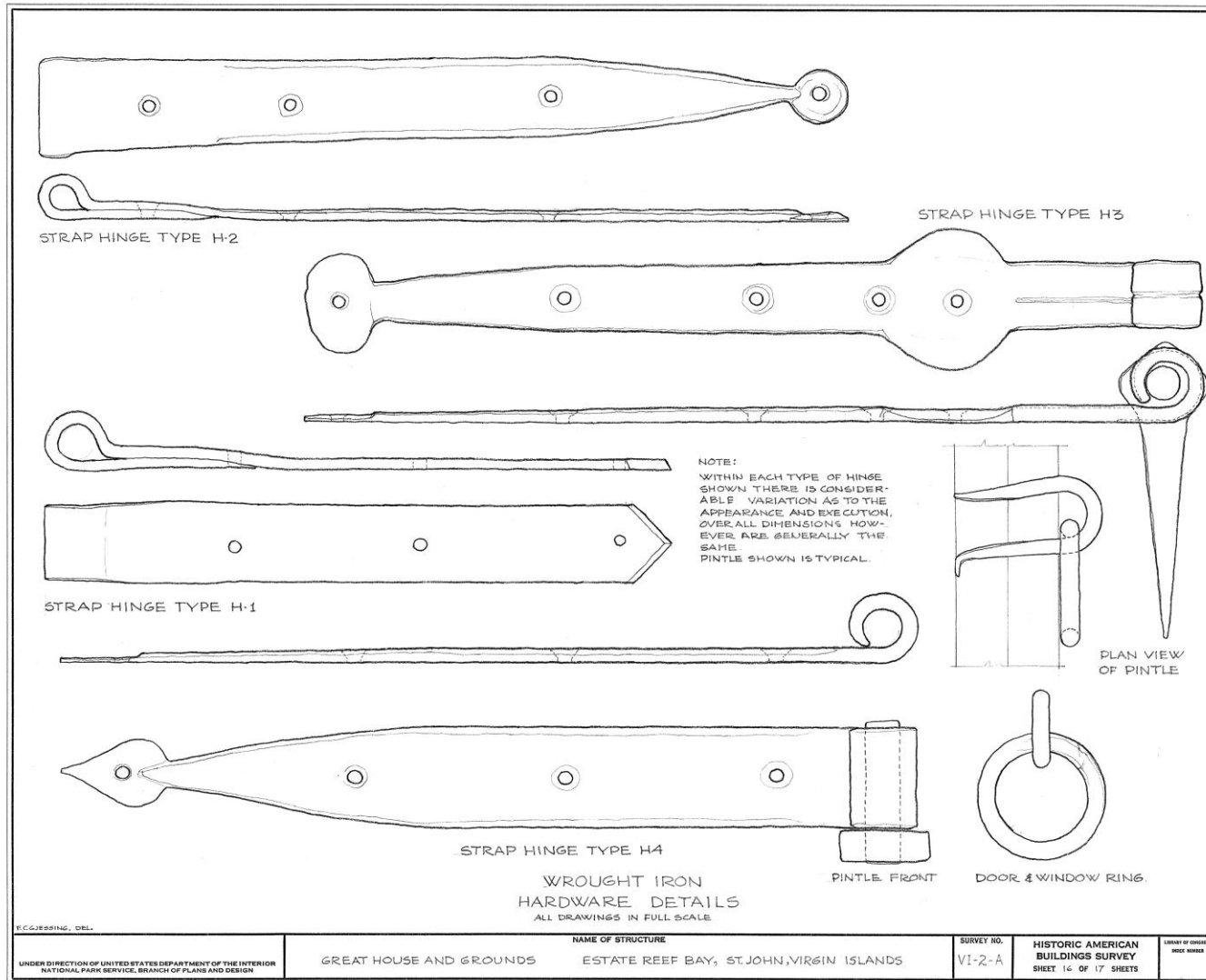




5m1

DH-3

TRIM LINE



U.S. GOVERNMENT PRINTING OFFICE 1935

TRIM LINE



